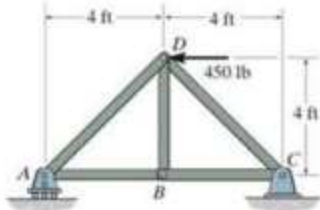


# ENGR 8 Assignment 9 In-Class Problems

Ch6 - F1,F2,F4,F5,1,9

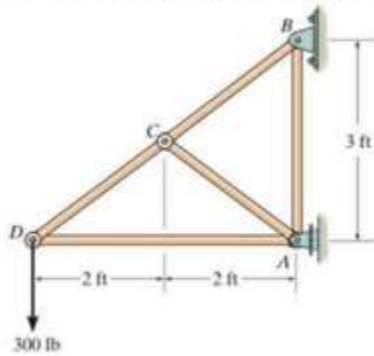
Ch6 - F7,F9,F11,33,47

**F6-1.** Determine the force in each member of the truss. State if the members are in tension or compression.



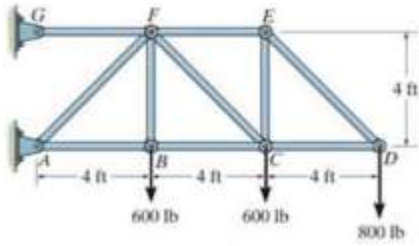
$F_{ad} = 318.2 \text{ (C)}, F_{ab} = 225 \text{ (T)}, F_{bc} = 225 \text{ (T)}, F_{cd} = 318 \text{ (T)}$

**F6-2.** Determine the force in each member of the truss. State if the members are in tension or compression.



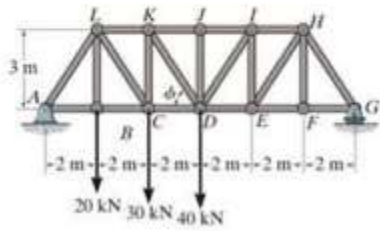
$F_{ad} = 400 \text{ (C)}, F_{bc} = 500 \text{ (T)}, F_{cd} = 500 \text{ (T)}, F_{ac} = F_{ab} = 0$

**F6-7.** Determine the force in members *BC*, *CF*, and *FE*. State if the members are in tension or compression.



$$F_{cf} = 1980(T), F_{fe} = 800(T), F_{bc} = 2200(C)$$

**F6-9.** Determine the force in members *KJ*, *KD*, and *CD* of the Pratt truss. State if the members are in tension or compression.



$$F_{cd} = 62.2(T), F_{kj} = 66.7(C), F_{kd} = 8.01(T)$$