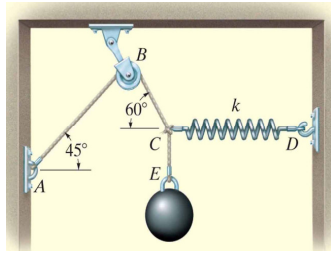
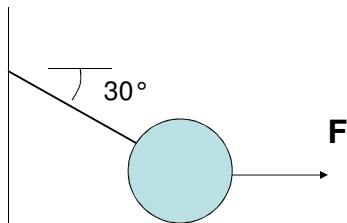
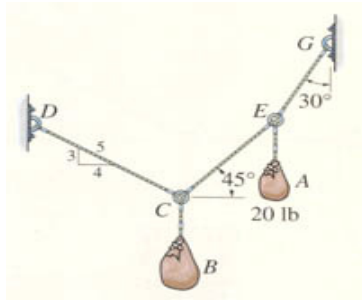


**Practice:** The sphere has a weight of 60N. Draw the FBD of the sphere, the cord CE, the knot C, and the pulley B.



**Example 1.** The 10-kg sphere is at rest on the smooth horizontal surface. A) Determine the normal force on the floor and the tension in the cable if  $F = 20$  N.





### EXAMPLE 2

**Find:** Forces in the cables and weight of sack B.