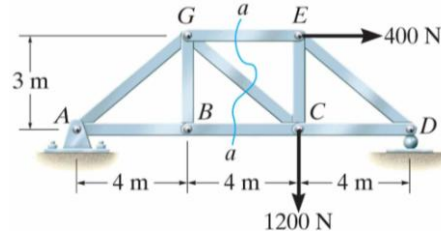


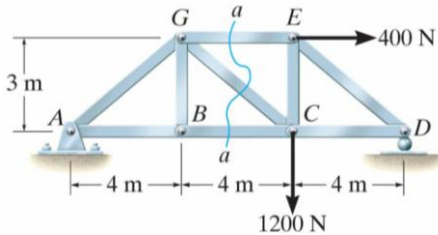
Method of Sections

- To find forces in selected members
- Divide truss into 2 sections

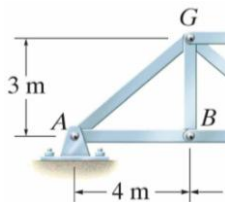


Steps:

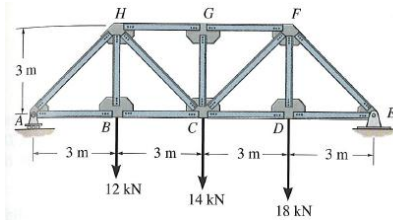
1. Find reactions at supports.
2. Select a cutting section (if possible cutting only 3 members) that divides truss into two parts.
3. FBD of one portion of truss.
4. 3 Equations of equilibrium (non-concurrent, non-parallel).



Example 1. Find forces in members EG, CG and BC.



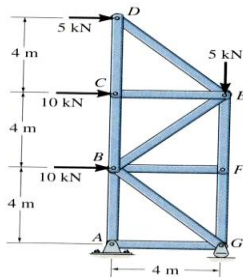
EXAMPLE 2



Given: Loads shown

Find: Force in members GF, CF, and CD.

GROUP PROBLEM



Given: Loading shown.

Find: Forces in members BC, BE, and EF.