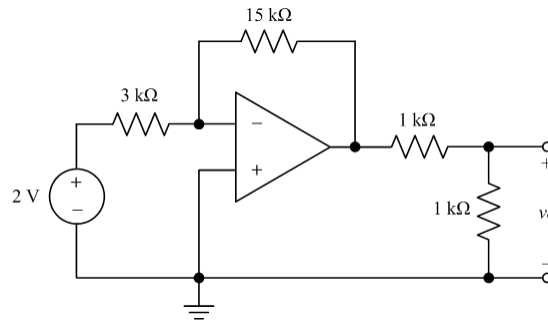
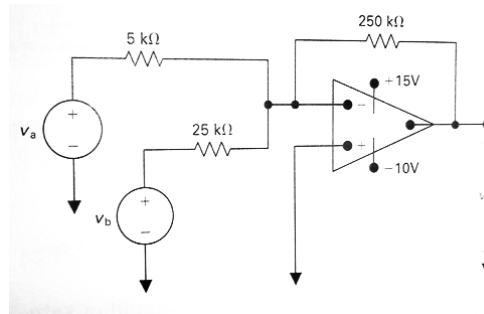


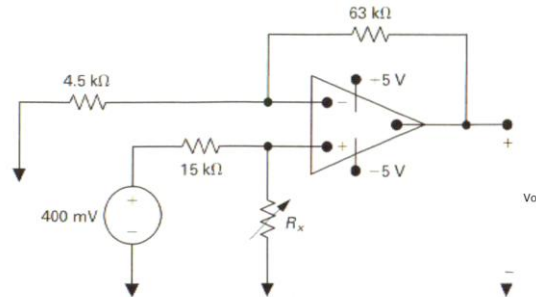
1) Problem 1 INVERTING OP AMPfind the voltage v_o across the $1\text{k}\Omega$ resistor. [-5V]

33

2) SUMMING OP-AMPFind V_o in the circuit shown if $V_a=0.1\text{V}$ and $V_b=0.25\text{V}$ [-7.5]

34

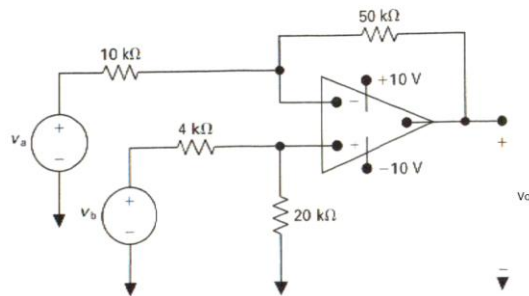
- 3) NON INVERTING Find the output Voltage when R_x is set to 60k
 What R_x will cause saturation? [4.8V, 75k]



35

4) Problem 4 Difference Amplifier

If $V_b=4.0V$, what values of V_a will keep linear operation? [$2 \leq v_a \leq 6$]



36