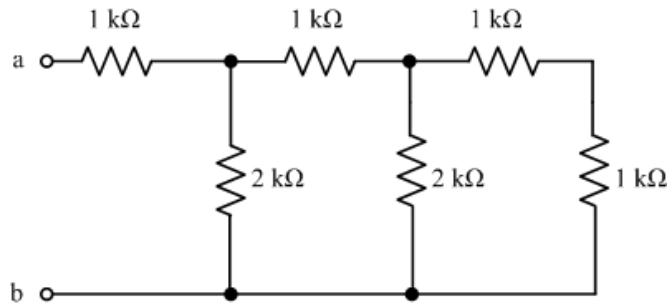
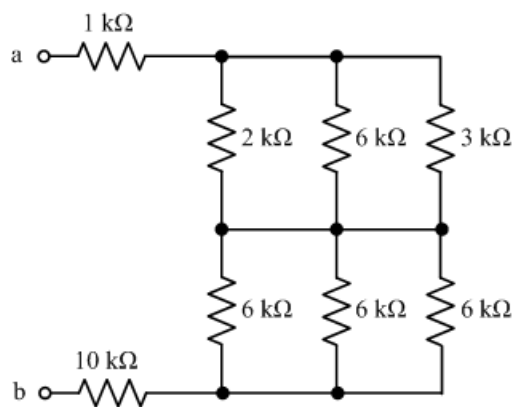


Cleo: [Problem 1](#) Find the equivalent resistance at terminals a and b.



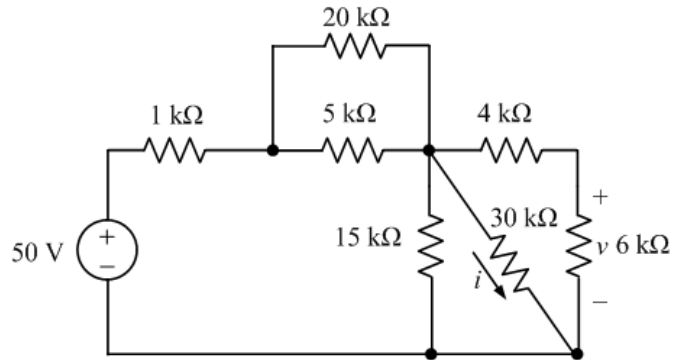
(2k-ohm)

Cleo: [Problem 2](#) Reduce the circuit to a single resistor at terminals a and b.

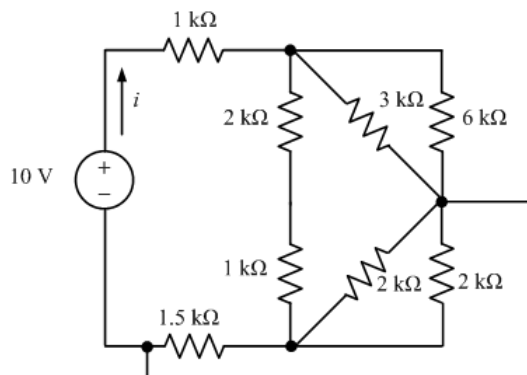


(14 k-ohm)

Find the equivalent resistance seen by the 50V source



Cleo: [Problem 3](#) Find the current i in the circuit. (First find equivalent R seen by 10V)



4.38 mA